

ARCHITECT:

PROJECT:

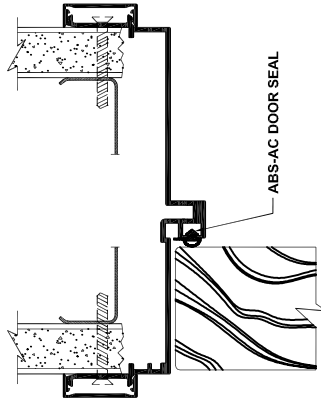
DISTRIBUTOR:

DATE:

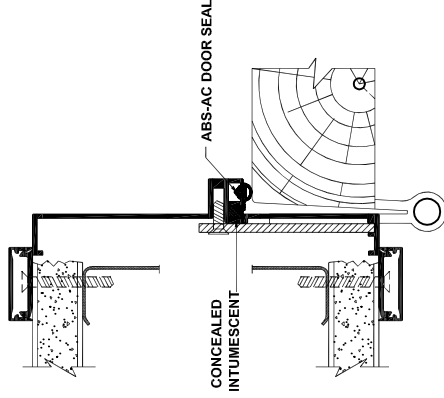
SHEET:

DOORMERICA
ABS - Architectural Components
 8401 Rovana Cir. Sacramento CA, 95828
 Toll Free Number: (866) 566-2161
 Phone Main: (916) 388-2161
 Fax: (916) 388-9336

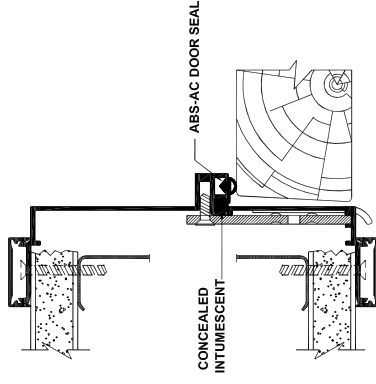
(E) 4-7/8" WALL - 1" TRIM



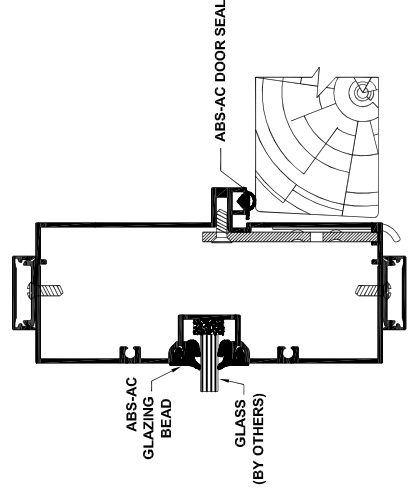
A DOOR FRAME HEADER



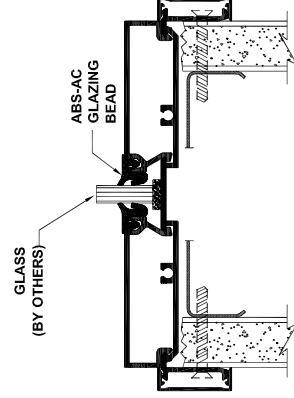
B DOOR FRAME HINGE JAMB



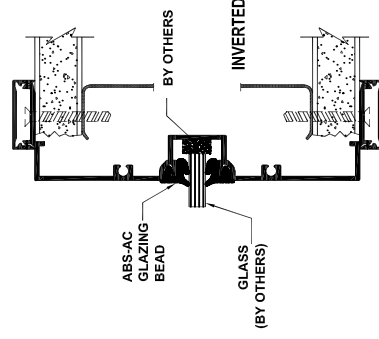
C DOOR FRAME STRIKE JAMB



D STRIKE JAMB & S.L. MULLION W/ 2" FACE



E SILL BASE ON DRYWALL PARTITION



F GLAZING RAIL

ARCHITECT:

PROJECT:

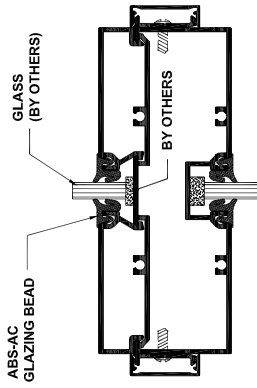
DISTRIBUTOR:

DATE:

SHEET:

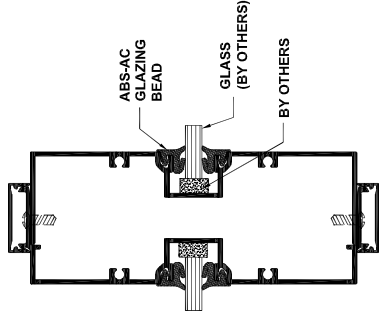
DOORMERICA
 ABS - Architectural Components
 8401 Rovana Cir. Sacramento CA. 95828
 Toll Free Number: (866) 566-2161
 Phone Main: (916) 388-2161
 Fax: (916) 388-9336

(E) 4-7/8" WALL - 1" TRIM



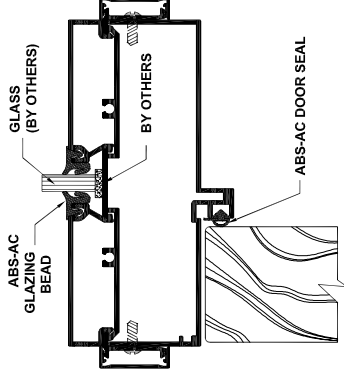
G

HORIZONTAL MULLION W/ 2" FACE



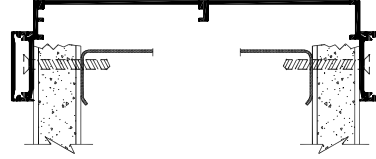
H

VERTICAL MULLION W/ 2" FACE



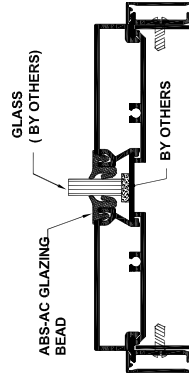
I

TRANSOM HEADER W/ 2" FACE



K

CASED OPENING



J

SILL BASE AND SILL STOP W/ RETAINER